

**Riverside
College**

Widnes & Runcorn

ADULT COURSES

JANUARY 2022



Ofsted
Outstanding
Provider

COURSES INCLUDE:

- Beauty Therapy
- Catering
- Counselling
- Engineering & Welding
- English, Maths & ESOL
- Health & Safety
- Health & Social Care
- Mental Health & Support
- Spanish
- Teaching Professions

**PLUS: see inside
for September
2022 courses**

REGISTER YOUR INTEREST ONLINE AT:

www.riversidecollege.ac.uk/adults

and we will contact you with your
enrolment details.

**Enrolment will take
place by telephone.**

**Our team will contact
you to complete your
enrolment over
the phone.**

WELCOME TO RIVERSIDE COLLEGE

**MAKE 2022 YOUR YEAR TO
LEARN SOMETHING NEW**

COURSES STARTING FROM JANUARY 2022

We are pleased to be able to offer a range of college based and distance learning courses starting early in 2022.

For detailed information on the courses listed in this brochure, information on fees and enrolment, and to register your interest, please go to

www.riversidecollege.ac.uk/adults

Enrolment will take place by telephone and once you have registered your interest, you will receive an email advising you when we will be calling to complete your enrolment over the phone.

In the meantime if you have any questions at all, please email our Admissions Team at **advice@riverside.ac.uk**

Please note: Places are allocated on a first come, first served basis (based on the date you apply).

**Please check our website for
up to date information about
enrolment guidelines and
course availability.**

COURSES STARTING IN SEPTEMBER 2022

You can choose from a wide range of substantial, part time and short courses starting in September 2022 designed to help you achieve your goals.

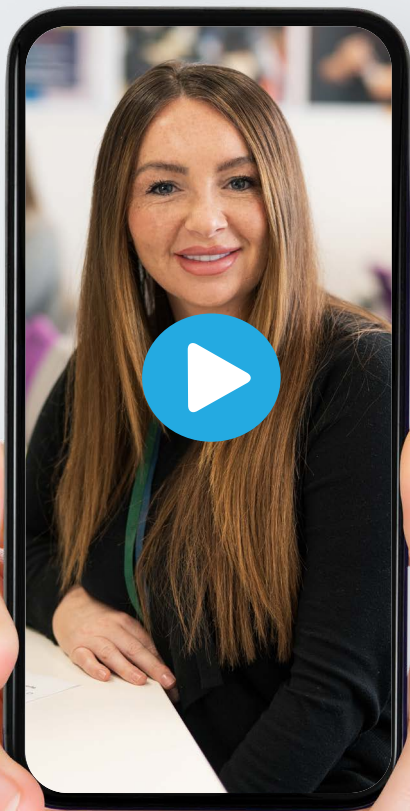
Visit **www.riverside.ac.uk** for more information about courses and to apply online, or email the Adult Admissions Team at **advice@riverside.ac.uk**

Courses are being reviewed for September 2022 and new courses will be added.

Please enquire if you cannot find the course you are looking for.

VIRTUAL EXPERIENCE

Hold your device's camera over a QR code for course info and to watch our virtual campus tours and welcome videos!



VIRTUAL TOURS

[www.riversidecollege.ac.uk/
virtual-tour](http://www.riversidecollege.ac.uk/virtual-tour)



ADULT WELCOME VIDEOS AND MORE INFORMATION

www.riversidecollege.ac.uk/adults



HIGHER EDUCATION WELCOME VIDEOS AND MORE INFORMATION

[www.riversidecollege.ac.uk/
higher-education/](http://www.riversidecollege.ac.uk/higher-education/)

COURSE FEES AND FUNDING

Many of our students study for FREE!

Don't be put off by the cost of study, many of our students study for free. Eligibility depends on your individual circumstances and the course you have chosen to study.

Please note: course fees and funding eligibility are subject to change. The information in this guide is current in December 2021, please check our website for the latest information:

www.riversidecollege.ac.uk/adults/fees/

Courses FREE for everyone:

- Courses that are listed as FREE in the guide without an asterisk (*) are free regardless of your circumstances.
- Courses that are listed as FREE (LCR residents only) are free for anyone who lives in the Liverpool City Region (Liverpool, Halton, Knowsley, St Helens, Sefton and Wirral) regardless of your circumstances.

Fee remission criteria to study for FREE:

Entry, Level 1 and Level 2 courses that are eligible for fee remission as indicated by an asterisk (*) after the course fee in the guide, may be free for you if you meet the government's fee remission criteria below:

Entry and Level 1 courses will be FREE if you:

- are unemployed and in receipt of a state benefit
- live in the Liverpool City Region (Liverpool, Halton, Knowsley, St Helens, Sefton and Wirral) and earn less than £18,525 per year (£1,544 per month)
- live outside of the Liverpool City Region and earn less than £17,374.50 per year (£1,448 per month)

Level 2 courses will be FREE if you:

- are unemployed and in receipt of a state benefit
- live in the Liverpool City Region (Liverpool, Halton, Knowsley, St Helens, Sefton and Wirral).
- live outside of the Liverpool City Region and earn less than £17,374.50 per year (£1,448 per month)



- are studying a FULL Level 2 course, are aged 19-23, and have NOT already achieved a FULL Level 2 qualification (equivalent to 5 GCSEs at grade A-C/9-4)

Level 3 Courses will be FREE if you:

- are aged 19-23 and do not already have a full level 3 qualification (equivalent to 2 A Levels).
- are aged 19+, do not already have a full Level 3 qualification (equivalent to 2 A Levels) and are choosing to study one of the following courses funded by the Lifetime Skills Guarantee:
 - Level 3 AAT Advanced Diploma in Accounting
 - Level 3 Multimedia Computing
 - Level 3 Diploma in Electrical Installation
 - Level 3 Diploma in Counselling

Student finance:

- Adult Learner Loans are also available for eligible adults enrolling on courses with a plus sign (+) after the fee, see details on our website.
- Higher Education Student Loans are available for eligible adults, see details on our website.

Paying for your course?

If you are paying for your course you will do so at enrolment by card or cash.

Some courses can be paid for by instalments (indicated by a Δ in the guide) or payment plans, please enquire at enrolment.

All course fees listed are per year and terms and conditions apply.

Go to **www.riversidecollege.ac.uk/adults/fees** to find out more.

PLEASE NOTE:

Course fees and funding eligibility are subject to review by Government and therefore subject to change.

Funded by the Liverpool City Region.



LIVERPOOL
CITY REGION
COMBINED AUTHORITY

METROMAYOR
LIVERPOOL CITY REGION

FREE COURSES FOR LIVERPOOL CITY REGION RESIDENTS

(Liverpool, Halton,
Knowsley, St Helens,
Sefton and Wirral)

Preparation for Working in Engineering:
Advanced Manufacturing & Renewable
Maintenance Skills - Page 6

Renewables Operations & Maintenance - Page 6

Electric / Hybrid Vehicles (Principles &
Maintenance, includes IMI Award) - Page 6

Preparation for Working in the Care Sector - Page 7



METROMAYOR
LIVERPOOL CITY REGION

See www.riverside.ac.uk for more
information about the courses

We make every effort to ensure the information in this guide is correct at the time of publication. However, we reserve the right to make changes to our course offering for operational reasons.

Courses operate subject to sufficient numbers, and places are allocated on a first come first served basis. The College's liability will extend only to the reimbursement of fees paid if the course is closed. If a student decides to withdraw from a course, the fees refundable are dependent on the length of the course and the number of weeks into the course the student withdraws, unless a medical certificate is formally produced.

COURSES

STARTING EARLY 2022



Level	Course Title	Duration	Day(s) of the week	Start Date	Times	Fee (per year)
-------	--------------	----------	--------------------	------------	-------	----------------

Catering & Hospitality

E3	Introduction to Cake Decorating	6 weeks	Thurs	13/01/22	6pm - 9pm	£130*
E3	Introduction to Cake Decorating	6 weeks	Thurs	21/04/22	6pm - 9pm	£130*

Engineering

1	Introduction to Welding Certificate	10 weeks	Mon	24/01/22	6.30pm - 8.30pm	£199*
2	Renewables Operations & Maintenance	12 weeks	Wed	26/01/22	6pm - 9pm	FREE (LCR residents only)
2	Preparation for Working in Engineering: Advanced Manufacturing & Renewable Maintenance Skills	12 weeks	Mon	24/01/22	6pm - 9pm	FREE (LCR residents only)
2	Electric / Hybrid Vehicles (Principles & Maintenance, includes IMI Award)	12 weeks	Mon	24/01/22	6pm - 9pm	FREE (LCR residents only)

English, Maths & ESOL

E-L1	Maths	18 weeks	Various day and evening options across the week, starting w/c 31/01/22. Please contact admissions on 0151 257 2053 for more information.			FREE
E-L1	Maths	18 weeks				FREE
E-L1	English	18 weeks				FREE
E-L1	ESOL	18 weeks				FREE

Beauty Therapy

2	Award in Therapeutic Head Massage (with holistic facial)	12 weeks	Thurs	27/01/22	6pm - 9pm	£130*
---	--	----------	-------	----------	-----------	-------

Health & Safety

N/A	IOSH Safety, Health & Environment for Construction Workers	1 day	Various	Various	8.45am - 3.30pm	£120
N/A	CITB Health, Safety & Environment Test (CSCS)	45 mins	Tues	Various	1.30pm	£35

Level	Course Title	Duration	Day(s) of the week	Start Date	Times	Fee (per year)
-------	--------------	----------	--------------------	------------	-------	----------------

Health & Social Care and Counselling

2	Introduction to Counselling Skills Certificate	15 weeks	Tues	01/03/22	9.30am - 12pm	£220*
2	Introduction to Counselling Skills Certificate	15 weeks	Thurs	03/03/22	9.30am - 12pm	£220*
2	Introduction to Counselling Skills Certificate	15 weeks	Thurs	03/03/22	6pm - 8.30pm	£220*
2	Preparation for Working in the Care Sector	12 weeks	Mon	28/02/22	2.30pm - 4.30pm	FREE (LCR residents only)
2	Preparation for Working in the Care Sector	12 weeks	Mon	28/02/22	6pm - 8pm	FREE (LCR residents only)

SCHOLARS



TRAINING RESTAURANT

Scholars Training Restaurant offers diners gourmet food in our contemporary restaurant.



For opening dates, times and how to book, go to www.riversidecollege.ac.uk/scholars

Open to students, staff and the general public

Level	Course Title	Duration	Day(s) of the week	Start Date	Times	Fee (per year)
-------	--------------	----------	--------------------	------------	-------	----------------

Mental Health & Supporting Others

2	Certificate in Awareness of Mental Health Problems	16 weeks	Wed	02/02/22	12.30pm - 3pm	£110*
1	Certificate in Awareness of Substance Misuse	6 weeks	Thurs	13/01/22	9.30am - 11.30am	£60*
1	Certificate in Awareness of Alcohol Misuse	10 weeks	Thurs	10/03/22	9.30am - 11.30am	£110*

Teaching Professions

3	Award in Education & Training	14 weeks	Mon	31/01/22	6pm - 8.30pm	£495
---	-------------------------------	----------	-----	----------	--------------	------

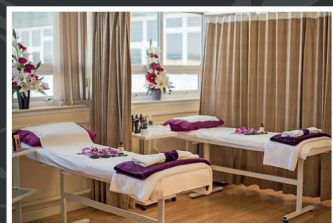
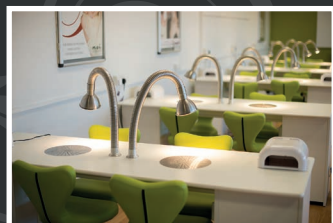
Spanish

N/A	Spanish for Beginners Plus	11 weeks	Mon	24/01/22	6pm - 8pm	£150
-----	----------------------------	----------	-----	----------	-----------	------

Vita Salons

Our Vita Salons at Riverside College offer a vast range of professional hair, beauty and nail treatments to leave you looking and feeling great!

Vita Salons are open to the general public, for opening dates, times and how to book, go to www.riversidecollege.ac.uk/vita-salons



Vita



DISTANCE LEARNING COURSES

FREE* qualifications you can study in your own time from home!

Riverside College offer fully funded Distance Learning qualifications for anyone aged 19 or over, with no course fee* if you complete.

Our Distance Learning training courses and qualifications offer great opportunities to develop and upskill yourself personally and professionally.

Complete an online application form at www.riversidecollege.ac.uk/distance-learning-courses and our team will contact you to enrol on your course of choice.

Management & Professional Level 2 Qualifications:

- Equality and Diversity
- Principles of Team Leading
- Principles of Customer Service
- Principles of Business Admin
- Environmental Sustainability

Health & Social Care Level 2 Qualifications:

- Understanding the Safe Handling of Medication in Health and Social Care
- Understanding the Care and Management of Diabetes
- Understanding Dignity and Safeguarding in Adult Health and Social Care
- Common Health Conditions
- Prevention and Control of Infection
- Principles and Control of Infection in Health Care Settings
- Understanding Behaviour that Challenges
- Falls Prevention Awareness
- Principles of Care Planning
- Principles of Dementia Care
- Principles of End of Life Care
- Understanding Nutrition and Health

Mental Health & Support Level 2 Qualifications:

- Mental Health Awareness
- Understanding Autism
- Understanding Dyslexia and other Specific Learning Difficulties
- Principles of Working with Individuals with Learning Disabilities
- Understanding Children and Young People's Mental Health
- Counselling Skills
- Behaviour that Challenges in Children
- Awareness of Bullying in Children and Young People
- Self Harm and Suicide Awareness and Prevention
- Special Educational Needs and Disabilities

***These courses are fully funded with no fee if you complete your course. Fee if you do not complete is £99.**

Apply online at www.riversidecollege.ac.uk/distance-learning-courses



COURSES STARTING SEPTEMBER 2022

Apply now for a variety of courses starting in September. By choosing Riverside College you will benefit from a college with outstanding results, exceptional financial support and bursaries, award winning student support and strong links with employers and universities.

Courses include:

- AAT Accounting
- Access to Higher Education
- Beauty, Nails, Hairdressing & Media Makeup
- Computing & IT
- English, Maths & ESOL
- Higher Education / Degree Courses
- Mental Health & Supporting Others
- Engineering & Welding
- Catering & Hospitality
- Construction Trades
- Counselling & Health & Social Care
- Green Energy, Sustainability & Electric Vehicles
- Personal Training / Fitness Instructing
- Spanish
- Teaching Assistant
- Teaching Professions

AND MANY MORE!

Access to Higher Education

Your route to a new career

The Access to Higher Education (HE) Diploma is a one year level 3 qualification which prepares you to study at university level. It is aimed at anyone who would like to progress to a Higher Education course but does not have the traditional qualifications to do so.

We have courses available in the following pathways:

- Nursing & Midwifery
- Allied Healthcare
- Social Science
- Humanities
- Teaching
- Science
- Science (Engineering)
- Business
- Level 2 Preparation for Access

Courses are being reviewed for September 2022 and new courses will be added so do let us know if you cannot find the course you are looking for.



STAY LOCAL GO FAR

HIGHER EDUCATION COURSES

- 97% pass rate in 2021
- 47% of BA Degree Graduates awarded a 1st Class Honours in 2021
- 78% of student achieved a 2:1 or above degree classification in 2021
- 90% Satisfaction rate for tutor contact and accessibility NSS 2021
- 82% Satisfaction rate for valuing students' opinion NSS 2021
- Less debt without compromising on quality
- £500 bursary gift for qualifying first year full time students (studying for 12 hours a week or more on certain courses)
- HE Student Loans available
- Small class sizes and dedicated support team

DEGREE COURSES IN

- Computing & IT
- Construction
- Counselling (Adults)
- Counselling (Children & Young People)
- Education & Teacher Training
- Engineering
- Health & Social Care
- Performing Arts – Media Makeup
- Sport

APPLY NOW AT
www.riversidecollege.ac.uk

**WATCH OUR
HIGHER EDUCATION
TOUR VIDEO HERE!**

[www.riversidecollege.ac.uk/
higher-education](http://www.riversidecollege.ac.uk/higher-education)



IN
PARTNERSHIP



QAA
UK Quality Assured



OPEN EVENTS & ENROLMENT



ADULT COURSE, HIGHER EDUCATION, SCHOOL LEAVER & APPRENTICESHIP OPEN EVENTS

- Wednesday 9th March 2022, 5pm - 7pm
- Tuesday 7th June 2022, 5pm - 7pm

ADULT COURSE ENROLMENT

Enrolment will take place by telephone. Our team will contact you to complete your enrolment over the phone.



**Riverside
College**

Widnes & Runcorn

Riverside College

Kingsway,
Widnes,
WA8 7QQ

Contact Us

Email: advice@riverside.ac.uk

Web: www.riversidecollege.ac.uk

Call: 0151 257 2053