



**Riverside  
College**

Widnes & Runcorn

# ADULT COURSES 2024

## INCLUDING:

- ADULT COURSES STARTING FROM **JANUARY**
- ADULT COURSES STARTING FROM **SEPTEMBER**
- HIGHER EDUCATION COURSES
- ACCESS TO HIGHER EDUCATION COURSES
- DISTANCE LEARNING COURSES

  
**Ofsted**  
Outstanding  
Provider



**REGISTER YOUR INTEREST ONLINE:**

[www.riversidecollege.ac.uk/adults](http://www.riversidecollege.ac.uk/adults)

# WELCOME TO RIVERSIDE COLLEGE

MAKE A CHANGE IN 2024 & LEARN SOMETHING NEW

## See what your local college has to offer you!

If you are looking to make a change this year, perhaps by learning new skills, refreshing existing skills, or changing the direction of your career, we may have just the course for you!

In 2024, we are offering a variety of college based daytime/evening courses and online/distance learning courses to help you make that change and achieve your goals around your other commitments.

Our courses range from introductory through to degree level, starting in January and September.

For detailed information on all of our courses and start dates, please scan the QR codes or go to:

[www.riversidecollege.ac.uk/adults](http://www.riversidecollege.ac.uk/adults)

Financial support is available to help with the cost of studying and many of our students study for free depending on the course and individual circumstances. For further information please scan the QR code or go to:

[www.riversidecollege.ac.uk/adults/fees](http://www.riversidecollege.ac.uk/adults/fees)



## Contents

Higher Education Courses .....	Page 3
January 2024 Courses .....	Page 4
September 2024 Courses .....	Page 8
Access to Higher Education Courses .....	Page 9
Distance Learning Courses .....	Page 10
Fees & Funding .....	Page 11
Open Events .....	Page 12

# STAY LOCAL, GO FAR

## HIGHER EDUCATION COURSES

- 100% pass rate in 2023 for bachelor's degrees
- 42% of BA Degree Graduates achieved a 1st Class Honours in 2023
- 77% of students achieved a 2:1 or above degree classification in 2023
- High student satisfaction, 100% of students were positive about staff making the subject engaging and also that staff supported their learning in the National Student Survey 2023
- Less debt without compromising on quality
- £500 bursary gift for qualifying first year full time students (studying for 12 hours a week or more on certain courses)
- HE Student Loans available
- Small class sizes and dedicated support team

### DEGREE COURSES IN

- Computing & Digital Technologies
- Construction
- Counselling (Adults)
- Counselling (Children & Young People)
- Education & Teacher Training
- Engineering
- Health & Social Care
- Performing Arts - Media Makeup
- Sport

**APPLY NOW AT**  
[www.riversidecollege.ac.uk](http://www.riversidecollege.ac.uk)

### RIVERSIDE COLLEGE IS TOP NATIONALLY FOR TEACHING!

TOP OUT OF ALL UK HIGHER  
EDUCATION PROVIDERS, INCLUDING  
UNIVERSITIES

- NATIONAL STUDENT SURVEY  
2023 (NSS)



IN  
PARTNERSHIP



QAA

UK Quality Assured



# ADULT COURSES

## STARTING FROM JANUARY 2024

### ENROLMENT INFORMATION

Register your interest in your chosen course by using the QR code below, or by visiting our website: [www.riversidecollege.ac.uk/adults](http://www.riversidecollege.ac.uk/adults)

**Once you have registered your interest**, you will receive an email advising you of the enrolment process for your chosen course.

You can enrol over the phone for the majority of courses in this guide.

If you apply for courses listed under Accounting, English, Maths, English for Speakers of Other Languages (ESOL) and Mental Health & Supporting Others, you will be invited into college to enrol.

For any questions, please email our Admissions Team at [advice@riverside.ac.uk](mailto:advice@riverside.ac.uk)

**Please note:** Places are allocated on a first come, first served basis (based on the date you apply) and are subject to availability.

**Please check our website for up to date information about enrolment guidelines and course availability.**



**Key for Course Fees:** look for the symbol next to the fee. Courses with no symbol next to the fee are payable at enrolment. See page 11 for more details on fees and funding.

*	May be free for you if you are eligible for fee remission	+	Eligible for Advanced Learner Loans
S	HE student loans available	Δ	Can be paid in instalments (courses at least one term long over £330 in cost)

Level	Course Title	Duration	Day(s) of the week	Start Date	Times	Fee (per year)
-------	--------------	----------	--------------------	------------	-------	----------------

#### Accounting

4	AAT Diploma in Professional Accounting	15-18 months	Mon	22/01/24	9.30am - 4.30pm	£2,573Δ+
4	AAT Diploma in Professional Accounting	15-18 months	Tues	23/01/24	9.30am - 4.30pm	£2,573Δ+

#### Beauty Therapy

2	Award in Therapeutic Head Massage	15 weeks	Wed	24/01/24	6pm - 9pm	£195*
N/A	Brow Lamination	3 weeks	Thurs	25/01/24	6pm - 9pm	£40*
N/A	Brow Mapping & Threading	6 weeks	Thurs	22/02/24	6pm - 9pm	£65*
N/A	Volume Semi Permanent Lash	6 weeks	Thurs	18/04/24	6pm - 9pm	£195 (includes kit)

Level	Course Title	Duration	Day(s) of the week	Start Date	Times	Fee (per year)
-------	--------------	----------	--------------------	------------	-------	----------------

### Catering & Hospitality

E3	Stage 2 Intermediate Cake Decorating	12 weeks	Thurs	14/03/24	6pm - 9pm	£140*
E2	Introduction to Cake Decorating - Basic Techniques	6 weeks	Thurs	25/01/24	6pm - 9pm	£140*
2	Professional Patisserie & Confectionery	16 weeks	Wed	24/01/24	6pm - 9pm	£240*
N/A	Baking Easter Treats	3 weeks	Mon	04/03/24	6pm - 9pm	£45

### Construction

N/A	Domestic Assessor	10 weeks	Thurs	TBC	TBC	TBC
-----	-------------------	----------	-------	-----	-----	-----

### CSCS Test Support Packages

CSCS is the leading skills certification scheme within the UK construction industry and provides proof that individuals working on construction sites have the required training and qualifications for the type of work they carry out.

The CITB Health, Safety & Environment (HS&E) test ensures workers have a minimum level of health, safety, and environmental awareness before going on site. Riverside College is an approved testing centre for the CITB.

The Highfield Level 1 Award in Health and Safety within a Construction Environment (RQF) has been designed so that learners who successfully complete it and go on to complete the CITB Operatives Health, Safety and Environment knowledge test will have fulfilled the requirements needed to apply for the CSCS GREEN Labourers Card.

We have different packages available for you to choose from, see below.

**Please note:** The CITB Health, Safety & Environment test must be booked 48 hours in advance.

To secure your place or to find out more information, please contact our CSCS Programmes Team on **0151 257 2179** or email **cscs@riversidecollege.ac.uk**

N/A	<b>1. CITB HS&amp;E Test</b> CITB Health, Safety & Environment test	45 mins	Thurs	Various	10.30am	£35
N/A	<b>2. Construction Related Qualification</b> Level 1 Award in Health and Safety within a Construction Environment	Flexible	E-learning	Various	Various	£99
N/A	<b>3. Construction Related Qualification &amp; CITB HS&amp;E Test</b> • Level 1 Award in Health and Safety within a Construction Environment • CITB Health, Safety & Environment test	60 mins	Thurs	Various	9.15am	£130
N/A	<b>4. Construction Related Qualification, CITB HS&amp;E Test &amp; CSCS Card App.</b> • Level 1 Award in Health and Safety within a Construction Environment • CITB Health, Safety & Environment test • CSCS card application	Various	Various	Various	Various	£175

Level	Course Title	Duration	Day(s) of the week	Start Date	Times	Fee (per year)
-------	--------------	----------	--------------------	------------	-------	----------------

Engineering						
2	Preparation for working in Advanced Manufacturing & Renewable Maintenance Skills	12 weeks	Mon	22/01/24	6pm - 9pm	FREE (LCR residents only)
2	City and Guilds Award in 2D Computer Aided Design (CRONTON CAMPUS)	16 weeks	Thurs	01/02/24	6pm - 8.30pm	£390*

English, Maths & ESOL						
E-L2	Maths	1 year	Various day and evening options across the week, starting w/c 29th January 2024. Details of class days and times will be discussed at enrolment. For ESOL, you will need to bring your passport or identity card to assess your eligibility for funding.			FREE
E-L2	English	1 year				FREE
E-L2	English for Speakers of other Languages (ESOL)	1 year				FREE** (see below)

\*\* ESOL: FREE if unemployed or low wage. Otherwise £140 per term.

# MULTIPLY

## FREE Maths Tuition for all Adults

Want to improve your maths skills but don't feel ready for a full qualification?

- Improve your maths confidence in work
- Support your children with their homework
- Manage your money more effectively

You will be supported in small groups, in person or online.

The benefits are endless, sign up at

[www.riverside.ac.uk/multiply](http://www.riverside.ac.uk/multiply)



Health & Care and Counselling						
2	Introduction to Counselling Skills Certificate	17 weeks	Tues	06/02/24	9.30am - 12pm	£220*
2	Introduction to Counselling Skills Certificate	17 weeks	Thurs	08/02/24	9.30am - 12pm	£220*
2	Introduction to Counselling Skills Certificate	17 weeks	Thurs	08/02/24	6pm - 8.30pm	£220*
1	Career Launch in Preparing to Work in Adult Social Care	12 weeks	Mon	26/02/24	2pm - 4pm	FREE (LCR residents only)

Languages						
N/A	Spanish Advanced Beginners	11 weeks	Mon	22/01/24	6pm - 8pm	£135



Level	Course Title	Duration	Day(s) of the week	Start Date	Times	Fee (per year)
-------	--------------	----------	--------------------	------------	-------	----------------

### Mental Health & Supporting Others

1	Certificate in Alcohol Awareness	12 weeks	Weds	06/03/24	6pm - 8pm	£110*
1	Certificate in Alcohol Awareness	12 weeks	Thurs	07/03/24	9.30am - 11.30am	£110*
1	Certificate in Substance Misuse	7 weeks	Weds	10/01/24	6pm - 8pm	£60*
1	Certificate in Substance Misuse	7 weeks	Thurs	11/01/24	9.30am - 11.30am	£60*
2	Certificate in Awareness of Mental Health Problems	16 weeks	Weds	31/01/24	12.30pm - 3pm	£140*
2	Certificate in Awareness of Mental Health Problems	16 weeks	Thurs	01/02/24	12.30pm - 3pm	£140*

### Teaching Professions

3	Award in Education & Training	12 weeks	Thurs	07/03/24	5.30pm - 7.30pm	£495*
---	-------------------------------	----------	-------	----------	-----------------	-------

**Key for Course Fees:** look for the symbol next to the fee. Courses with no symbol next to the fee are payable at enrolment. See page 11 for more details on fees and funding.

*	May be free for you if you are eligible for fee remission	+	Eligible for Advanced Learner Loans
S	HE student loans available	Δ	Can be paid in instalments (courses at least one term long over £330 in cost)

## SCHOLARS

TRAINING RESTAURANT

Scholars Training Restaurant offers diners gourmet food in our contemporary restaurant

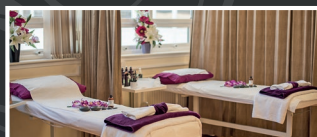
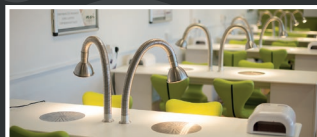
**Open to students, staff and the general public**

For opening dates, times and how to book, visit [www.riversidecollege.ac.uk/scholars](http://www.riversidecollege.ac.uk/scholars)

## Vita Salons at Riverside College

Offering a vast range of professional hair, beauty and nail treatments to leave you looking and feeling great!

Vita Salons are open to the general public. For opening dates, times and how to book, visit [www.riversidecollege.ac.uk/vita-salons](http://www.riversidecollege.ac.uk/vita-salons)



# COURSES STARTING SEPTEMBER 2024

Computing Student Michael Abbott

## Apply now for a variety of courses starting in September 2024

By choosing Riverside College, you will benefit from a college with outstanding results, exceptional financial support and bursaries, award winning student support and strong links with employers and universities.

Apply Now



### Courses include:

- AAT Accounting
  - Access to Higher Education
  - Beauty, Nails, Hairdressing & Media Makeup
  - Catering & Hospitality
  - Computing & Digital Technologies
  - Construction Trades
  - Counselling & Health & Social Care
  - Engineering & Welding
  - English, Maths & ESOL
  - Green Energy, Sustainability & Electric Vehicles
  - Higher Education / Degree Courses
  - Mental Health & Supporting Others
  - Personal Training / Fitness Instructing
  - Spanish
  - Teaching Assistant
  - Teaching Professions
- and many more!**

Scan the QR code or apply online for a course at Riverside College starting in September 2024 by visiting our website: **[www.riversidecollege.ac.uk/adults](http://www.riversidecollege.ac.uk/adults)**

Once you have applied, you will receive an email advising you of the enrolment process for your chosen course.

**Please note that places are only secured at enrolment and enrolment appointments are allocated based on the date of application and subject to available places.**

Courses are being reviewed for September and new courses may be added. Please email the Adult Admissions Team at **[advice@riverside.ac.uk](mailto:advice@riverside.ac.uk)** if you cannot find the course you are looking for.

Please check our website for up-to-date information about enrolment guidelines and course availability.



STUDY ONLINE OR IN THE CLASSROOM

# ACCESS TO HIGHER EDUCATION COURSES

**GAIN THE QUALIFICATIONS TO GO TO UNIVERSITY IN ONE YEAR**



## ONLINE & CLASSROOM ACCESS COURSES

Do you aspire to study at university but don't have the qualifications?

Our one-year Access course will give you the Level 3 qualification required!

Study in your own time with our flexible online learning options, with weekly face-to-face drop in support sessions when and if needed

## REASONS TO CHOOSE RIVERSIDE

- Flexible online study - work and study at times to suit you
- Ofsted Outstanding
- Study for **FREE** with an **Advanced Learner Loan** (terms & conditions apply)
- Dedicated specialist Access teachers
- Classroom-based option for Nursing, Midwifery, Health Professionals & Level 2 Preparation for Access

## ONLINE or CLASSROOM BASED COURSES:

- Midwifery
- Nursing
- Health Professionals

## ONLINE COURSES:

- Business and Management
- Criminology
- Engineering
- English Studies
- Psychology
- Radiography
- Science (Biophysical)
- Social Science

## PREPARATION FOR ACCESS:

- Level 2 Preparation for Access is a classroom-based course

**SCAN TO  
LEARN  
MORE &  
APPLY  
ONLINE**



# DISTANCE LEARNING COURSES

**Complete  
in 4-16  
Weeks!**



## **FREE\*** qualifications you can study in your own time from home!

At Riverside College we offer a wide range of fully funded Distance Learning qualifications for anyone aged 19 or over, with no course fee\* if you complete.

### **Level 3 Qualifications\*\***

- Level 3 Certificate in Understanding Autism
- Level 3 Certificate in Understanding the Principles of Dementia Care
- Level 3 Certificate in Understanding Mental Health

### **Level 2 Qualifications**

- Cleaning Knowledge & Skills
- Digital Marketing
- Environmental Sustainability
- Event Planning
- Information, Advice & Guidance
- Safeguarding, Prevent & British Values

### **Health & Care Level 2 Qualifications**

- Understanding the Safe Handling of Medication in Health and Social Care
- Understanding the Care and Management of Diabetes
- Understanding Dignity and Safeguarding in Adult Health and Social Care
- Common Health Conditions
- Prevention and Control of Infection
- Principles and Control of Infection in Health Care Settings
- Understanding Behaviour that Challenges
- Falls Prevention Awareness
- Principles of Care Planning
- Principles of Dementia Care
- Principles of End of Life Care
- Understanding Nutrition and Health

### **Management & Professional Level 2 Qualifications**

- Equality and Diversity
- Principles of Team Leading
- Principles of Customer Service
- Principles of Business Admin

### **Mental Health & Support Level 2 Qualifications**

- Mental Health Awareness
- Understanding Autism
- Understanding Dyslexia and other Specific Learning Difficulties
- Principles of Working with Individuals with Learning Disabilities
- Understanding Children and Young People Mental Health
- Counselling Skills
- Understanding Distressed Behaviour in Children
- Awareness in Bullying in Children and Young People
- Self Harm and Suicide Awareness and Prevention
- Special Educational Needs and Disabilities

For more information, please call  
**0151 257 2175** or email  
**[distancelearning@riversidecollege.ac.uk](mailto:distancelearning@riversidecollege.ac.uk)**

Scan the QR code to learn more about our range of courses and to apply online. Our team will contact you to enrol on your course.

**[www.riversidecollege.ac.uk/distance-learning-courses](http://www.riversidecollege.ac.uk/distance-learning-courses)**



\* These courses are fully funded with no fee if you complete your course. The fee if you do not complete is £99.

\*\* Level 3 courses have separate eligibility criteria, please enquire. The fee if you do not complete is £99.

# COURSE FEES & FUNDING

## Many of our students study for **FREE!**

Don't be put off by the cost of study, many of our students study for free. Eligibility depends on your individual circumstances and the course you have chosen to study.

**Please note:** course fees and funding eligibility are subject to change. The information in this guide is current in December 2023. Please check our website for the latest information  
[www.riversidecollege.ac.uk/adults/fees](http://www.riversidecollege.ac.uk/adults/fees)

### Courses **FREE** for everyone:

- Courses that are listed as FREE without an asterisk (\*) are free regardless of your circumstances.
- Courses that are listed as FREE (LCR residents only) are free for anyone who lives in the Liverpool City Region (Liverpool, Halton, Knowsley, St Helens, Sefton and Wirral) regardless of circumstances.
- Courses on the Distance Learning pages are FREE if you complete. The fee if you do not complete is £99.

### Fee remission criteria to study for **FREE**:

Courses that are eligible for fee remission are indicated by an asterisk (\*) after the course fee in the guide. These may be free for you if you meet the government's fee remission criteria below:

#### Entry, Level 1 and Level 2 courses may be **FREE** if you:

- Live in the Liverpool City Region (Liverpool, Halton, Knowsley, St Helens, Sefton and Wirral)
- Live outside of the Liverpool City Region and are either:
  - unemployed, available for work and in receipt of a state benefit
  - earning less than £20,319 per year/£1,603 per month (gross salary)
  - studying a **FULL** Level 2 course, are aged 19-23, and have **NOT** already achieved a FULL Level 2 qualification (equivalent to 5 GCSEs at grade A-C/9-4)

(See the course information pages on the website for **FULL Level 2 qualification** confirmation)



#### Level 3 courses in this guide may be **FREE** if you:

Live within the Liverpool City Region (Liverpool, Halton, Knowsley, St Helens, Sefton and Wirral) and meet all of the following criteria:

- You are unemployed, available for work and are in receipt of a state benefit OR earn less than £31,600 per year (gross salary)

If you do not live in the Liverpool City Region you will be required to pay the course fee in full at enrolment

**You will be required to provide evidence of address/salary/benefits for funding eligibility at enrolment.**

### Student Loans:

Advanced Learner Loans are also available for eligible adults enrolling on courses with a plus sign (+) after the fee.

### Paying for your course?

If you are paying for your course, you will do so at enrolment by card or cash.

Some courses can be paid for by instalments (indicated by a Δ in the guide) or payment plans. Please enquire at enrolment.

All course fees listed are per year and terms and conditions apply.

Go to [www.riversidecollege.ac.uk/adults/fees](http://www.riversidecollege.ac.uk/adults/fees) to find out more.

## **FREE ENTRY LEVEL, LEVEL 1 & LEVEL 2 COURSES FOR LIVERPOOL CITY REGION RESIDENTS**

(Liverpool, Halton, Knowsley, St Helens, Sefton and Wirral)



**METRO MAYOR**  
LIVERPOOL CITY REGION

**SCHOOL LEAVER, ADULT, HIGHER EDUCATION & APPRENTICE**

# OPEN EVENTS

**Riverside  
College**

Widnes & Runcorn

- **Tuesday 12th March 2024 5pm - 7pm**
- **Tuesday 11th June 2024 5pm - 7pm**

## Why Choose Riverside?

- Ofsted Outstanding
- 99% pass rate
- FREE bus pass with 18 dedicated college bus services (terms and conditions apply)
- Industry links with over 700 local, regional and national employers
- State of the art facilities

**Apply Now:**



[www.riversidecollege.ac.uk/apply](http://www.riversidecollege.ac.uk/apply)



**Ofsted**  
Outstanding  
Provider

## Contact Us

**Email:** [advice@riverside.ac.uk](mailto:advice@riverside.ac.uk)

**Web:** [www.riversidecollege.ac.uk](http://www.riversidecollege.ac.uk)

**Call:** 0151 257 2053

**Address:** Kingsway, Widnes, WA8 7QQ

We make every effort to ensure the information in this guide is correct at the time of publication. However, we reserve the right to make changes to our course offering for operational reasons.

Courses operate subject to sufficient numbers, and places are allocated on a first come first served basis.

Riverside College's liability will extend only to the reimbursement of fees paid if the course is closed. If a student decides to withdraw from a course, the fees refundable are dependent on the length of the course and the number of weeks into the course the student withdraws, unless a medical certificate is formally produced.