

# HIGHER EDUCATION COURSES

Riverside  
College

Widnes & Runcorn



STAY LOCAL, GO FAR

[www.riverside.ac.uk](http://www.riverside.ac.uk)

# WELCOME

## TO YOUR COURSE GUIDE

**Welcome to Riverside College's course guide for pre university and university level courses. At Riverside College we recognise the benefits of students completing their higher education course closer to home.**

With the convenience of a local college and outstanding value for money, alongside a distinctive education experience which provides outstanding results, our students are able to achieve their potential and progress in their chosen career.

Our inspiring tutors offer a high level of study support. Students are stretched and challenged academically whilst developing cutting-edge professional skills to ensure that they stand out when applying for employment or promotion. All of the Higher Education qualifications in this guide are industry focused and have been designed to give students the opportunity to progress and excel in their careers.

If you are interested in any of the courses featured, you can apply direct to us, no need to apply through UCAS. Visit **[www.riverside.ac.uk](http://www.riverside.ac.uk)** or speak to one of our dedicated admissions team by emailing **[advice@riverside.ac.uk](mailto:advice@riverside.ac.uk)** to apply.

Apply direct to us at **[www.riverside.ac.uk](http://www.riverside.ac.uk)**



Alex Headspith  
HND Engineering



"I can't sing your praises enough; you truly are the best. Never ever did I believe I would have been able to complete a university course! My head has hurt from thinking at times, it challenged me beyond belief, and I doubted if I could do it but thanks to you, I got through it."

Riverside College HE Spring Survey



# CONTENTS

Welcome	02
Why Choose Riverside?	04
Staffordshire University Partnership	06
Celebrating Graduation	08
Student Finance	10
Supporting You	11
Higher Education Qualifications Explained	12

## COURSES

Higher Education Courses	13
Engineering	14
Construction	15
Media Makeup	16
Computing	18
Counselling	20
Health & Social Care	22
Sport	24
Education	26
Teacher Education	27
AAT Accounting (Level 4)	28
Higher Apprenticeships	29
Pre-University / Access to Higher Education	30
How to Apply	31
How to Find Us	31

Apply direct to us at [www.riverside.ac.uk](http://www.riverside.ac.uk)

# WHY CHOOSE RIVERSIDE FOR YOUR HIGHER EDUCATION?

**At Riverside College our Higher Education qualifications are designed to enhance career prospects, support progression and promotion, and increase earning potential.**

They also offer you the opportunity for a complete change of direction.

There are so many reasons to choose Riverside College for your Higher Education. With the rising costs of going to university, it makes sense to stay local and go far when you have exceptional quality education on your doorstep.

**1**

## OUTSTANDING RESULTS

Our students achieve exceptional results, which are significantly above national averages:

- 100% pass rate in 2022
- 35% of BA Degree Graduates achieved a 1st Class Honours in 2022
- 77% of students achieved a 2:1 or above degree classification in 2022

**2**

## £18 MILLION INVESTMENT

The college continually invests in the latest facilities and technology at its Riverside College and Cronton Sixth Form campuses. Higher Education students at both campuses have dedicated study areas. NEW for 2023: wellbeing and sports facilities including a sports lab and modern gym at Cronton College.



Apply direct to us at [www.riverside.ac.uk](http://www.riverside.ac.uk)

3

**LESS STUDENT DEBT**

Our fees are lower than universities, meaning that you can complete your qualification with less debt but without compromising on quality.

4

**ACCESS TO HIGHLY QUALIFIED AND EXPERIENCED TUTORS**

Our small class sizes mean students get more contact time and support with our highly qualified and experienced tutors. Our dedicated support teams also ensure that you are supported in all aspects of your student experience.

5

**STAY LOCAL, GO FAR**

Our undergraduates recognise the many financial and other practical benefits of staying close to home and completing their qualification locally. These include less student debt, lower living costs and familiar surroundings, whilst we still offer the same standard of qualifications and teaching alongside small class sizes and increased one to one support.

6

**BURSARY GIFT**

A bursary of £500 for all eligible first year fulltime higher education students (Sport, IT and Health & Social Care).

7

**FIT STUDY AROUND YOUR WORK/LIFE**

We ensure that our students have a good study/work/life balance. We do this by timetabling our courses over as few days as possible.

8

**GRADUATE IN STYLE**

All of our HE students have a graduation ceremony either at the prestigious new Cronton Playhouse theatre, or the impressive Kings Hall in Staffordshire (for Staffordshire University students).

9

**HIGH QUALITY PARTNERSHIPS**

Riverside College is proud to be a franchised partner of Staffordshire University, a high quality, top 5 university – see page 6 for full details. We are also part of Shaping Futures which is an outreach programme designed to raise attainment and aspiration in the Liverpool City Region.

IN  
PARTNERSHIP



# STAFFORDSHIRE UNIVERSITY PARTNERSHIP



IN  
PARTNERSHIP

**Riverside College is proud to be a franchised partner of Staffordshire University, a higher education institution with campuses in Stoke-on-Trent, Stafford and London.**

If you are looking to study one of our partnered courses at an advanced or degree-level, you'll get the best that both Riverside College and Staffordshire University have to offer.

Our long-standing partnership with Staffordshire University sees our current students sitting among a global network of over 15,000 enrolled students and connects our college with a huge number of education institutes around the world. You will also be invited to the Staffordshire University graduation ceremony when you graduate.

The connections we make through and with Staffordshire University are constantly influencing our teaching practices and are creating new opportunities for students in-line with their commitment to graduate employability.



Staffordshire University are proud to be ranked:

**TOP 5**  
UK  
UNIVERSITY  
StudentCrowd University  
Awards 2022

**TOP 10**  
FOR JOB  
PROSPECTS  
StudentCrowd University  
Awards 2022

**TOP 15**  
FOR STUDENT  
SATISFACTION  
Complete University  
Guide 2022

**TOP 15**  
FOR COURSE  
CONTENT  
StudentCrowd University  
Awards 2022

Apply direct to us at [www.riverside.ac.uk](http://www.riverside.ac.uk)

# STUDENT PROFILE

“.....

*I have loved every minute of my FdA and Top Up Degree in Education. I have made loads of new friends and we are so supportive of each other. I love the sense of togetherness and help from my tutor, who has been amazing and really supportive. I would recommend it to anyone. Dream big!*

**Britani Humphries**

Progression: Primary School Teacher Training

.....”



Apply direct to us at [www.riverside.ac.uk](http://www.riverside.ac.uk)

# CELEBRATING GRADUATION

Student success and celebrating student achievements are extremely important to us. All of our Higher Education students have the opportunity to celebrate their achievements at the annual Riverside College Graduation Ceremony.

In addition, every student who graduates on a course which is awarded by Staffordshire University will also be invited to graduate at Staffordshire University.







Apply direct to us at [www.riverside.ac.uk](http://www.riverside.ac.uk)

# STUDENT FINANCE

## PRE-UNIVERSITY COURSES

For information about fees, funding and loans relating to our adult courses featured on page 30 please go to our website at [www.riversidecollege.ac.uk/fees](http://www.riversidecollege.ac.uk/fees)

## HIGHER EDUCATION COURSES

Tuition fee loans make gaining a degree much more affordable than you may think. Riverside College supports students to access quality, local higher education in the most affordable way.

## STUDENT LOANS

Tuition fee loans are available for all first time full and part time undergraduates if required. You won't have to repay anything until you're earning over a certain amount, which is £25,000 a year for degrees starting after 1st August 2023. If you earn less than that you won't repay anything. If you're earning more than that, the Student Loans Company will work out your repayments at 9% of your income over that amount.

For more information visit [www.gov.uk/repaying-your-student-loan](http://www.gov.uk/repaying-your-student-loan)

Apply direct to us at [www.riverside.ac.uk](http://www.riverside.ac.uk)

## OTHER FINANCIAL SUPPORT

There are many other opportunities to gain help with your finances. For further information on those listed below, please go to the Student Finance website, [www.gov.uk/student-finance](http://www.gov.uk/student-finance)

### Just a few of these are listed here:

- Maintenance Loans
- Disabled Students Allowance
- Parents Learning Allowance / Childcare Grant
- The Adults Dependants Grants

To find out what support you could be eligible for, please email our Admissions Team.  
[advice@riverside.ac.uk](mailto:advice@riverside.ac.uk)



DEGREE  
GRADUATES  
EARN ON AVERAGE  
**£10,000 MORE**  
PER YEAR

Graduate Labour Market Statistics

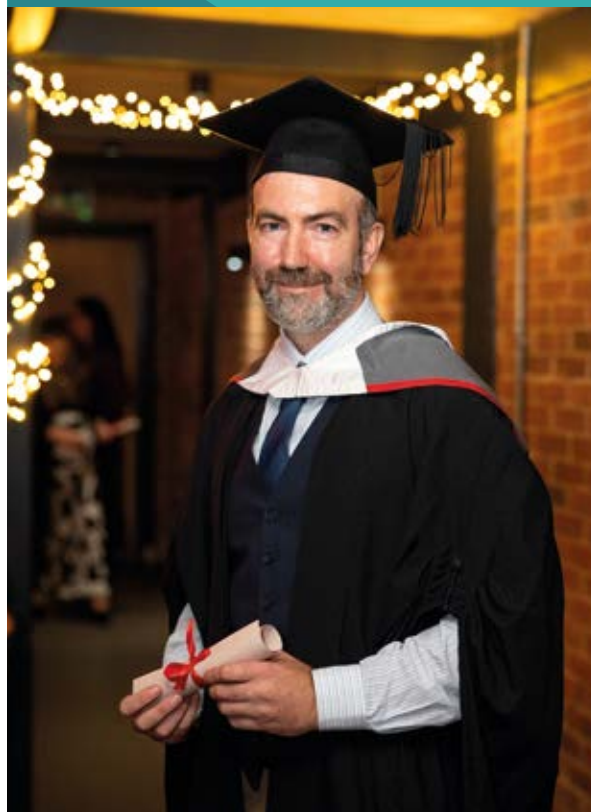


## SUPPORTING YOU

At Riverside College we have a dedicated Higher Education Pastoral Team who can help you with everything from applying for student finance, to supporting you to fit learning around your other commitments.

When you start your course you will be assigned a personal tutor who will guide you through your course to support you to develop personally, professionally and academically through one to one tutorials and additional activities such as work experience, trips and guest speakers. Our student services, pastoral support and study support teams are also available to help you overcome any obstacles to your success.

Apply direct to us at [www.riverside.ac.uk](http://www.riverside.ac.uk)





# HIGHER EDUCATION QUALIFICATIONS EXPLAINED

At Riverside College, we offer students the opportunity to build their higher education qualifications up to a full degree within the same amount of time it takes at university whilst offering greater flexibility. Completing a Foundation Degree (FdSc) or HNC and HND gives you an earlier exit point with a recognised qualification.

You can then choose a Top Up degree that matches your needs and ambitions.

Our 1 Year Top Up degrees are available to progressing and external students. Please see the individual entry requirements for each course.

**HNC (Level 4)**  
1 Year

.....

**HND (Level 5)**  
1 Year

Practical qualifications that give you skills for the workplace as well as the academic modules required to progress onto the Top Up Degree.

## **Foundation Degree FdSc / FdA**

This qualification is equivalent to the first two years of a degree-level programme. It combines work-based learning and academic study.

## **Top Up Degree**

Top up your HND or FdSc/ FdA to a Degree in 1 year.

## TEACHER EDUCATION COURSES

You can use your trade, skill, or degree to become a teacher with the **Certificate in Education (PCET) Level 5** and the **Post Graduate Certificate in Education (PCET) Level 7**. Both courses offer students with and without a university degree the opportunity to gain a teaching qualification to teach in post 16 education and training settings. See page 27 for more details.

Apply direct to us at [www.riverside.ac.uk](http://www.riverside.ac.uk)



# COURSES

Engineering 14

Media Makeup with SFX 16

Computing 18

Counselling 20

Health and Social Care 22

Sport 24

Education 26

Teacher Education 27

AAT 28

Higher Apprenticeships 29

Adult Courses 30



**Start Date:** September

**Duration:** 2 years

**Days/Evenings per week:** 1  
afternoon & evening

**Entry Requirements:**

64 UCAS points, made up of a combination of the following:

- Level 3 qualification in a relevant subject e.g. BTEC Extended Diploma in Engineering.
- AS maths or level 3 equivalent.
- GCSE maths and English at Grade C/4 or equivalent.

**Start Date:** September

**Duration:** 1 year

**Days/Evenings per week:** 1 day

**Entry Requirements:**

- Candidates must have studied and successfully completed the HNC Engineering (RQF).
- GCSE maths and English at Grade C/4 or equivalent.
- Completion of a pre-course bridge assessment (where appropriate).

# ENGINEERING

## HNC in Engineering

This is a specialist work related qualification that covers all of the key knowledge, understanding and practical skills required in the engineering sector. It is considered nationally by employers to be one of the benchmark qualifications for the industry. This qualification provides the education and training for engineers and technicians who are either employed at or are aspiring to work at a professional level in a variety of engineering roles.

## Careers in Engineering

Employers place a high value on individuals who possess a Higher National Certificate (HNC) and it can open up higher level jobs within the industry or lead directly to a pay rise or a promotion with your current employer. Completion of the course may also lead to further study on a HND or degree programme in Engineering.

## HND in Engineering

The Higher National Diploma in Engineering is a one-year specialist work-related course, to allow you to top up your HNC Engineering (RQF) to a HND. At Riverside College, we offer two specialist pathways:

### Higher National Diploma in Engineering (Mechanical Engineering)

### Higher National Diploma in Engineering (Electrical and Electronic Engineering).

The course provides greater depth and specialisation than the HNC Engineering, enabling you to develop a wide range of practical skills, knowledge and understanding required for progression

into a team leader/management position within the Engineering Sector. You will further develop confidence in problem solving and decision making to support you to take personal responsibility in a range of situations. This, in turn, will assist your career progression and professional development. Engineering project management and quality management systems feature predominantly within this programme. Both general and specialist units have been selected to enable you to develop Engineering Skills for the future, including Sustainable Engineering. Students will complete specialist projects, as well as an in-depth research project linked to their workplace (where appropriate).

For more information please visit [www.riverside.ac.uk](http://www.riverside.ac.uk)



# CONSTRUCTION AND THE BUILT ENVIRONMENT

**HNC in Architectural Technology for England**

**HNC in Modern Methods of Construction for England**

**HNC in Construction Management for England**

**Start Date:** September

**Duration:** 2 years

**Days/Evenings per week:** 1  
afternoon and evening

## **Entry Requirements:**

64 UCAS points, made up  
of a combination of the  
following:

- Level 3 qualification in  
a relevant subject e.g.  
BTEC Extended Diploma in  
Construction.
- GCSE maths and English at  
minimum Grade 4/C.

Applicants with professional  
experience will also be  
considered on an individual  
basis – Please Enquire.

Our Construction and Built Environment qualifications are designed to meet the demands of employers in the construction sector, both locally and nationally. They are suitable for students already employed in the industry and looking to develop skills to achieve career goals or students aspiring to work at a professional level in a variety of construction and built environment roles.

You will study core units across all the courses including construction design project management, BIM (Building Information Modelling), and construction technologies, and continue down specialist pathways.

**Architectural Technology** lays the foundation of learning in this area by introducing different architectural technology functions with specialist units including principles of refurbishment and digital applications of BIM.

**Modern Methods in Construction** will develop your skills to meet the demands to adapt to a constantly changing world with specialist units including principles of alternative energy and off-site construction.

**Construction Management** is ideal for applicants who want to develop the skills and understanding to secure leadership and management roles in different construction functions with specialist units including financial management and business processes in construction.

## **Careers in Construction**

This course could lead students on to a career in construction including: Assistant Design Co-ordinator, Design & Build Co-ordinator, Construction Site Supervisor, Construction Design Technician, Site Manager, Project Manager, Health & Safety Manager, Planning Supervisor, Construction Technician, Architectural Technologist, Architectural Draftsperson, Information Manager, Architectural Technician, Architectural Designer.

For more information please visit [www.riverside.ac.uk](http://www.riverside.ac.uk)



# MEDIA MAKEUP

## HNC in Performing Arts (Makeup Artistry in the Creative Industries)

The HNC in Performing Arts (Makeup Artistry in Creative Industries) aims to prepare students for a range of technical, professional, and management career opportunities in Performing Arts and Media Makeup. It provides units that are hugely relevant to occupations and professions in which students intend to seek employment. During your course you will study units including, Advanced Special FX, Advanced Hair, Makeup Application, Fashion and Fashion Editorial Hair and Makeup, Period Hair and Makeup, Aging hair and Makeup (students will gain new skills in postiche making), Body Art (using a variety of advanced techniques and products) and Professional Development.

Students studying on the HNC and HND will have the opportunity to work on live briefs through established links with theatre production companies, fashion houses and makeup specialists. A variety of assessment methods will be used throughout the programme including, sketch book evidence, assignments, presentations, and practical application.

**Start Date:** September

**Duration:** 1 year

**Days/Evenings per week:** 3 days

### Entry Requirements:

GCSE English Language at a minimum of Grade C/ Grade 4 or equivalent.  
Plus 32 UCAS points from one of the following:

- Level 3 Advanced Diploma in Media and Fashion Makeup with Special Effects.
- 2 A Levels at a minimum grade D/3 (one of which should be art related).
- Vocational – Level 3 BTEC National Extended Diploma in an art-related subject.

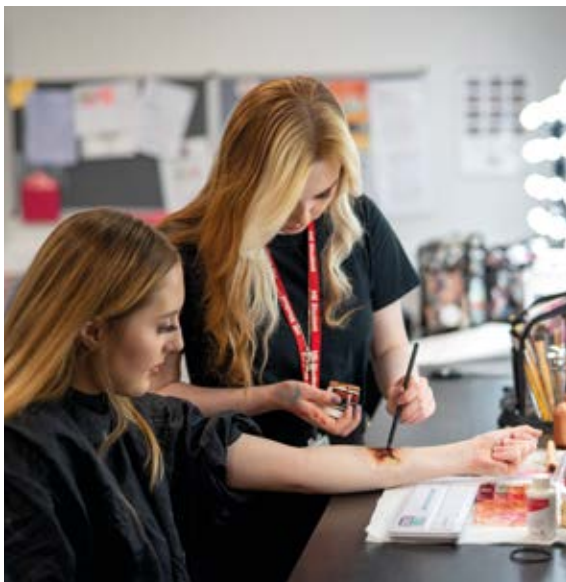
For mature students over 18, suitable work and professional experience may be taken into consideration instead of formal academic studies.

## Careers in Makeup and Special Effects

After completing the HNC /HND students may wish to pursue a career in advanced makeup and special effects in a role that requires advanced makeup artistry, for example within retail, and both commercial and theatrical settings. Students may also work within television, film and stage to create makeup, hair and prosthetics. Students may also wish to continue their studies on a one year “top up” to gain a BA (Hons) degree.

For more information please visit [www.riverside.ac.uk](http://www.riverside.ac.uk)





**Start Date:** September  
**Duration:** 1 year  
**Days/Evenings per week:** 3 days

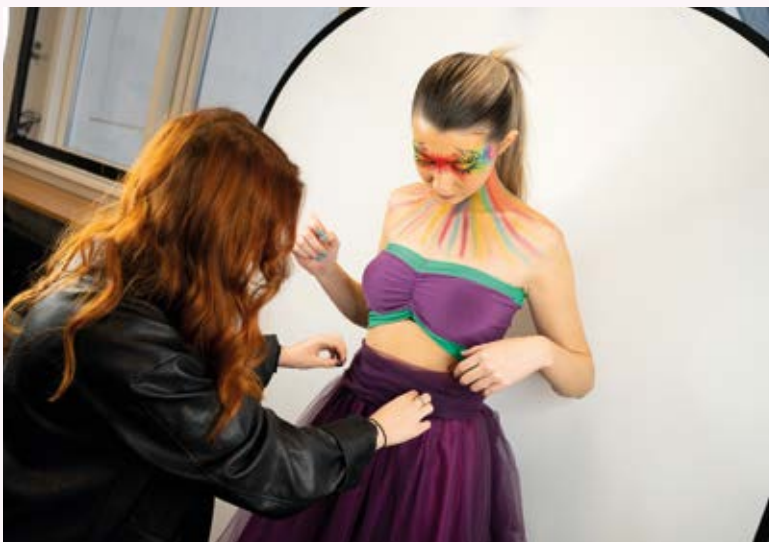
#### Entry Requirements:

For entry on to the HND, candidates will need at least a pass at HNC Performing Arts (Makeup Artistry in the Creative Industries), or an equivalent level 4 qualification, with a compatible unit structure and GCSE English Language at a minimum of Grade C/ Grade 4 or equivalent.

New students will require an interview and will need to prove some experience in design, hair and make-up, production arts, or equivalent, with a satisfactory reference and portfolio of work. Mature students with relevant experience may also be considered.

## HND in Performing Arts (Technical Arts)

This HND course explores each specialist area in further detail, whilst developing new techniques and competencies for a successful career in the industry. Topics included in the HND programme include The Freelance Makeup Artist, Advanced Special Effects 2, mask and puppet making, Creative Research Project, Management Role and Advanced Hair & Makeup Design.



“

*The tutors are fantastic; they go above and beyond. Can't praise them enough.*

**Riverside College HE Spring Survey**

”

For more information please visit [www.riverside.ac.uk](http://www.riverside.ac.uk)

**Start Date:** September  
**Duration:** 1 year  
**Days/Evenings per week:** 3 days

**Entry Requirements:**

64 UCAS points, made up of a combination of the following:

- Level 3 qualification in a relevant subject e.g. BTEC Extended Diploma in IT, Computing A Level.
- GCSE English and maths at a minimum of Grade C/ Grade 4 (or equivalent).

Applicants with professional experience will also be considered on an individual basis

**Start Date:** September  
**Duration:** 1 year  
**Days/Evenings per week:** 3 days

**Entry Requirements:**

- HNC Computing or Level 4 equivalent.

Applicants with professional experience will also be considered on an individual basis

# COMPUTING

## HNC Computing for England

Digital technologies and data analysis continue to transform our society at an exponential rate and rapid, radical technological change is bringing ever-wider new opportunities and possibilities for people across the planet and particularly in the Liverpool City Region.

As a Level 4 student, you may already be working in the Digital sector and want to progress your career, or you may have recently completed a Level 3 qualification in Computer Science or Information Technology. You may be able to gain additional industry qualifications as well as your main course.

Through studying this course, you will develop skills and proficiency designed to plug specific skills shortages locally and nationally, including Digital Infrastructure & Connectivity, Cybersecurity and Cross-Sector Digitalisation and Software Development. This course will also allow you to progress onto an HND or to access secure employment with further promotion prospects.

## HND Computing for England

Whether you are a digital professional with substantial industry experience wishing to continue developing or updating your digital skills, or a Level 4 graduate this course will further support you into future employment and study. There is an increasing demand on skills within the digital labour market within the Liverpool City Region and nationally. This course will allow you to gain leading edge skills through a nationally recognised qualification awarded by Pearson. You may be able to gain industry qualifications as well as your main course.

You will be introduced to a range of concepts in this future facing sector such as of Robotics and the use of sensors, Software Development, Data Analytics and Digital Sustainability, all directly correlating to the skills requirements of the local area and high-quality employment opportunities.

For more information please visit [www.riverside.ac.uk](http://www.riverside.ac.uk)



**Start Date:** September

**Duration:** 1 year

**Days/Evenings per week:** 3 days

**Entry Requirements:**

- HND Computing (Level 5) or HND Computing and Systems Development (Level 5).
- GCSE English Grade C/4 or equivalent.

## BSc (Hons) Computer Science (Top-Up)



The BSc (Hons) Computer Science Top-Up will provide HND Computing Level 5 and HND Computing and Systems Development graduates with the opportunity to progress their study at an advanced level through specialist modules that are linked to potential career choice e.g. within cloud-based technologies, in internet and web management, data analytics, and network computing. The course will allow you to fulfil your potential by providing degree level Computer Science education, which is relevant, grounded in research and at the forefront of knowledge and practice.

The course will prepare you to become proficient in programming languages and system design methods and techniques. You will be able to apply your skills in most areas of a dynamic, expanding global Computing Industry (for example, e-commerce, networking, software development, IT project management, website development, systems analyst and systems design).



## Higher Education Esports League



The Riverside College Higher Education Esports team have been accepted into the student led HE NSE Esports tournament. The Esports team will compete with other universities across the UK.

The NSE also has opportunities for work experience and are associated with Intel where they offer the Intel FutureGen leadership programme. This is a partnership between Intel and NSE to identify rising esports industry talent amongst students studying full-time at UK universities.

For more information please visit [www.riverside.ac.uk](http://www.riverside.ac.uk)



# COUNSELLING

## Foundation Degree in Counselling (FdSc)



**Start Date:** September

**Duration:** 3 years

**Days/Evenings per week:** 1 day or 2 evenings

### Entry Requirements:

- Level 3 in Counselling and GCSE English Language at a minimum of Grade C/ Grade 4 (or equivalent).
- An enhanced satisfactory DBS check.
- Two references (one from an academic source).
- Admissions and curriculum interview

This course will provide in depth professional training in counselling skills and theory. You will also develop a sound understanding of professional, legal and ethical issues. Work placement is an integral part of the Foundation Degree in Counselling. This focuses upon the development and application of a range of work based competences and will prepare you to make the transition from learner to counsellor. 100 supervised placement hours will be completed in years 2 and 3.

Successful completion of this course means that you will have achieved qualified practitioner status and will be eligible for employment as counsellors. Graduates may have the opportunity to complete a BSc (Hons) Counselling at Riverside College.

**Start Date:** September

**Duration:** 1 year

**Days/Evenings per week:** 1 day (or 2 evenings)

### Entry Requirements:

- A Foundation Degree or equivalent Counselling Diploma at Level 4 that consists of no less than 400 hours of training and a minimum of 100 hours of supervised counselling practice.
- Two written references, one from an academic source if possible.
- A personal statement
- GCSE Grade C/4 in English Language (or equivalent).

## Top-Up BSc (Hons) Counselling



This course has been specifically designed for counsellors who are already qualified to Diploma or Foundation Degree level. It provides an opportunity for you to deepen your knowledge of counselling theory and practice and to develop expertise in areas of specific interest.

To achieve the BSc (Hons) Counselling Degree you need to demonstrate a high level of academic competence. This will be achieved through written assignments and the completion of a research dissertation which explores a topic of your choice.

*The BSc (Hons) Counselling is classified as a full-time course but you will only be required to attend College for 1 day or 2 evenings per week.*

For more information please visit [www.riverside.ac.uk](http://www.riverside.ac.uk)



**Start Date:** September  
**Duration:** 3 years  
**Days/Evenings per week:** 1 day

**Entry Requirements:**

- Level 3 in Counselling or related qualification at level 3 and GCSE English Language at a minimum of Grade C/ Grade 4 (or equivalent).
- Experience of working in an environment with children for a minimum of one year.
- An enhanced satisfactory DBS check.
- Two references (one from an academic source).
- Admissions and curriculum interview

**Start Date:** September  
**Duration:** 1 year  
**Days/Evenings per week:** 1 day  
(or 2 evenings)

**Entry Requirements:**

- A Foundation Degree in counselling or an equivalent award which offers practitioner status as a Children Young Peoples Counsellor, and which consists of no less than 400 hours of training and a minimum of 100 hours of supervised counselling practice.
- Two written references, one from an academic source if possible.
- A personal statement and a GCSE Grade C/4 in English (or equivalent).

## Foundation Degree in Counselling Children and Young People (FdSc)



The Foundation Degree in Counselling Children and Young People is an innovative programme that provides education and training for working therapeutically with children and young people from early years to young adulthood using a variety of therapeutic approaches.

Successful completion of this course means that you will have achieved qualified practitioner status and will be eligible for employment as a counsellor working with children and young people. Graduates may have the opportunity to complete a BSc (Hons) Counselling or Top-Up BSc (Hons) Counselling Children and Young People at Riverside College.

Counselling children requires practitioners to have an in-depth understanding of child and adolescent development theory, child psychiatry, safeguarding and child protection policies.

## Top-Up BSc (Hons) Counselling Children and Young People



This course has been specifically developed for counsellors who are already qualified to Diploma or Foundation Degree level to work with Children and Young People. It provides an opportunity for candidates to deepen their understanding of counselling theory and practice and to develop expertise in areas of specific interest. To achieve the BSc (Hons) Counselling Children and Young People Degree you need to demonstrate a high level of academic competence. This will be achieved through written assignments and the completion of a research dissertation which explores a topic of your choice.

*The BSc (Hons) Counselling Children and Young People is classified as a full-time course but you will only be required to attend College for 1 day or 2 evenings per week.*

For more information please visit [www.riverside.ac.uk](http://www.riverside.ac.uk)



# HEALTH & SOCIAL CARE

## Foundation Degree in Health and Social Care (FdSc)



This course offers you the opportunity to develop core transferable skills and knowledge relevant to health care, social care and public health to enable you to gain employment in an area of your choice.

Employability skills are embedded throughout the award, with a clear focus on how the modules you study can be applied to the workplace. You will be expected to undertake paid or voluntary work experience in a health and social care setting.

**Start Date:** September

**Duration:** 2 years

**Days/Evenings per week:** 2 days

### Entry Requirements:

64 UCAS points, made up of a combination of the following:

- Level 3 qualification in a relevant subject e.g. BTEC Extended Diploma in Health and Social Care. A Levels in related subjects such as Health and Social Care, Biology and Social Science.
- GCSE English Language at a minimum of Grade C/ Grade 4 (or equivalent).
- A letter from an employer or unpaid work experience provider to confirm that the applicant has access to 70 hours of paid or unpaid work experience in Year 1 and 70 hours in Year 2.
- A current satisfactory enhanced DBS.



## Careers in Health and Social Care

Students can progress into many different careers within the health and social care industry including working in research centres, public health, health promotions, NHS support services, youth offender services, local authority, voluntary organisations and the education sector.

For more information please visit [www.riverside.ac.uk](http://www.riverside.ac.uk)



**Start Date:** September  
**Duration:** 1 year  
**Days/Evenings per week:** 2 days

**Entry Requirements:**

- Successful completion of the Foundation Degree in Health and Social Care at a Staffordshire University partner college or HND in Health and Social Care.
- GCSE English Language at a minimum of Grade C/ Grade 4 (or equivalent).

## Top-Up BSc (Hons) Health and Social Care



This year long course offers students with a level 5 qualification the opportunity to top up your qualification to a full bachelor's degree.

The BSc (Hons) Top Up year will allow you to study across a range of modules, enabling you to complete the course ready to gain a rewarding role within the Health and Social Care sector. Within the Employable Graduate module, you will compile a portfolio detailing your skills, knowledge and experience throughout your career and study so far. You will have the opportunity to reflect on your own development and also plan to make informed choices for your future career pathway.

You will also complete an Extended Project which allows you to make an in-depth study of a current issue within the sector, following your own interest for academic study. For students looking to move into leadership positions within the sector, the Leadership & Management module offers a theoretical insight into how leaders can make a positive difference in their workplace and guide their team effectively throughout a time of change in the Health and Social Care sector.

“ .....

*My course works well with my working commitments, and I have good work life balance. My tutors are very helpful, and I feel supported all of the time.*

**Riverside College HE Spring Survey**

..... ”

For more information please visit [www.riverside.ac.uk](http://www.riverside.ac.uk)



# SPORT

## Foundation Degree in Sport Coaching and PE (FdSc)



This course will provide in depth professional theory with the opportunity to progress to employment within the Sport, Leisure and Educational industry in a wide range of roles. It aims to provide a stimulating learning environment where students will develop a sound understanding of professional, legal and ethical issues. Increasing self-awareness and personal development are also an integral part of the course.

As a sports student you will have the opportunity to gain coaching experience with the Centre of Sporting Excellence sports teams. You will also have access to new state of the art sport facilities and modern gym at the Cronton Campus and will work closely with our external partners to make sure you develop the skills employers want.

**Start Date:** September

**Duration:** 2 years

**Days/Evenings per week:** 2 ½ days

### Entry Requirements:

64 UCAS points, made up of a combination of the following:

- Level 3 qualification in a relevant subject e.g. BTEC Extended Diploma in Sport or health related studies.
- A Levels in related subjects such as PE or Biology.
- GCSE English Language and maths at a minimum of Grade C/ Grade 4 (or equivalent).
- Applicants with industry/professional experience will also be considered on an individual basis.
- A current satisfactory enhanced DBS.

## NEW FOR 2023

New sports facilities including a new modern gym, sports science laboratory, sports hall and changing facilities.



For more information please visit [www.riverside.ac.uk](http://www.riverside.ac.uk)





## Top Up BA (Hons) Sport Coaching and Sport Development



The aim of this 1 year course is to top up your Foundation Degree or HND Sport to a BA (Hons) and maximise your employability. It will prepare you for employment in a range of careers including PE teaching, sports development and sports coaching.

During the Top Up you will complete modules in Children in Sport and PE, Global Sport in Development, Contemporary Issues and Personal and Professional Development.

**Start Date:** September

**Duration:** 1 year

**Days/Evenings per week:** 2 ½ days

### Entry Requirements:

- A UK Higher National Diploma or relevant Foundation Degree within a sport related discipline.
- GCSE English Language and maths at a minimum of Grade C/ Grade 4 (or equivalent).
- Current satisfactory enhanced DBS.

## Talented Athlete Scholarship Scheme (TASS)



Students who are competing at a high level in their chosen sport will also have access to the TASS (Talented Athlete Scholarship Scheme) which offers students the support to achieve within sport and their qualification. Find out more information on our website.

## Careers in Sport

You will have the opportunity to progress into a wide range of sport related careers, most commonly teaching, coaching, fitness instruction and sports development.

For more information please visit [www.riverside.ac.uk](http://www.riverside.ac.uk)

**Start Date:** September  
**Duration:** 2 years  
**Days/Evenings per week:** ½ day

**Entry Requirements:**

- Full Level 3 qualification (Evidence of a suitable work experience will be considered.)
- GCSE English Language and maths at a minimum of Grade C/ Grade 4 (or equivalent) or demonstration of Level 2 competence in English and maths.
- A minimum of four hours per week in an appropriate educational role and setting. Paid or voluntary.
- Current satisfactory enhanced DBS.

**Start Date:** September  
**Duration:** 1 year  
**Days/Evenings per week:** ½ day

**Entry Requirements:**

- Successful completion of the Foundation Degree in Education/Early Childhood Studies at a Staffordshire University partner college.
- Alternatively, completion of an equivalent education/early years based Foundation degree from another provider will be considered.
- GCSE English Language and maths at a minimum of Grade C/ Grade 4 (or equivalent).
- You must be employed for at least four hours per week in an appropriate educational role and setting. This employment may be paid or voluntary.
- Current satisfactory enhanced DBS.

# EDUCATION

## Foundation Degree in Education (FdA)



This course provides an excellent opportunity for teaching assistants, learning support workers and teaching and learning mentors to build on their knowledge and experience of working in education.

It will enhance your understanding of your current professional role and support career progression and professional development.

The course is specifically designed for people who wish to combine work and study. In addition to this, the course provides a route towards obtaining a degree and further professional qualifications.

## Top-Up BA (Hons) Education



This year long course offers students with a level 5 qualification the opportunity to top up your qualification to a full bachelor's degree. During your course, you will study modules including, Changes and Development in Education, Doing Education Differently, Individual Research Report, and The Reflective Practitioner.

## Careers in Education

You may progress to employment within family and children centres, care support, educational administration and management, play work, learning support and many other educational contexts. Alternatively, you may enter primary teacher training through PGCE Primary, Schools Direct, Schools Direct (salaried) and SCITT routes.

For more information please visit [www.riverside.ac.uk](http://www.riverside.ac.uk)



# TEACHER EDUCATION

## Certificate in Education (PCET) - Level 5



**Start Date:** September  
**Duration:** 2 years  
**Days/Evenings per week:** 4 hours

### Entry Requirements:

- GCSE English Language at a minimum of Grade C/ Grade 4 (or equivalent).
- Current satisfactory enhanced DBS.
- Take part in a Step into Teaching Day at College
- (PCET Level 5) Level 3 qualification in the subject/ skill area you wish to teach.
- (PCET Level 7) As above PLUS normally a 2:1 classification degree.

### In addition for both awards:

- **100 hours teaching practice and access to a subject specific mentor.**

You can use your trade, skill, or degree to become a teacher. Both courses offer students with and without a university degree the opportunity to gain a teaching qualification to teach in post-16 education and training settings.

See our website for information about our 14-week Level 3 Award in Education.

## Post Graduate Certificate in Education (PCET) - Level 7

This course will provide a generic route for those wishing to follow a teaching career in the Further Education and Skills Sector. This may include, further education colleges, sixth form colleges, work based learning, adult and community learning, the Police, Prison and Fire Services, the National Health Service and also across the many private sector training companies.

In addition, there are now teaching opportunities in some schools and academies for post-compulsory teachers, particularly for teachers who can offer a vocational subject.

You will study with trainee teachers from a variety of educational settings. Paid or voluntary teaching experience is a key feature of the course. You may also be able to undertake your teaching experience at the College.

## Careers in Teacher Education

Upon completion, successful teachers can undertake a period of professional formation leading to the achievement of Qualified Teaching and Learning Status (QTLS).

If you have completed the Certificate in Education you may be eligible to progress onto a degree level course in Education. The PGCE qualification offers you 60 credits towards a Masters in Education qualification.

For more information please visit [www.riverside.ac.uk](http://www.riverside.ac.uk)

**Start Date:** September  
**Duration:** 15-18 Months  
**Days/Evenings per week:** 1 Day or  
2 Evenings

**Entry Requirements:**

- AAT Level 3 Advanced Diploma in Accounting or an equivalent qualification.
- GCSEs at grade C or grade 4 or above or Level 2 equivalent qualification in English and maths.

## AAT Diploma in Professional Accounting – Level 4

**aat**  
Approved

The Level 4 qualification will enhance the skills already developed at Level 2 and Level 3, enabling you to maximise your opportunities. You will gain skills including, drafting financial statements for limited companies, knowledge and skills in complex management accounting techniques, the ability to analyse accounting systems and their associated controls, knowledge and skills in specialist accountancy and finance subjects.

At Riverside College we offer Level 2, 3 and 4 AAT qualifications in daytime or evening courses.

## Gain your AAT Accounting qualifications at Riverside College

Whether you are looking for a change in career, want to progress in your job or make the most of a career break, you can gain the accounting qualifications that employers want with us!

We have part time day and evening AAT courses at Level 2, 3 and 4. See [www.riversidecollege.ac.uk](http://www.riversidecollege.ac.uk) for details of courses.

**Funding and Advanced Learner Loans available.**

Apply direct to us at [www.riverside.ac.uk](http://www.riverside.ac.uk)

**aat**  
Approved





## WORLD SKILLS BRONZE MEDAL FOR AAT HIGHER APPRENTICES

Higher Apprentices Georgia McIntyre who works for Esken and Andrew Plumpton who works for RSK Accountancy have celebrated a fantastic win, with a bronze medal at WorldSkills UK.

After reaching the finals of the prestigious competition, the students who are currently working towards their Level 4 AAT, successfully achieved 3rd place after competing against some of the top higher apprentices in the country.



# HIGHER APPRENTICESHIPS

Higher Apprenticeships are an exciting opportunity to develop your skills, knowledge and qualifications to the highest level whilst continuing to earn a salary and progress your career.

Apprenticeships combine work with 'off the job' study working to specific industry standard linked to your job role. The apprenticeship is supported by your employer and at the higher level, your job needs to have responsibilities either at supervisory/management or higher technician levels. Higher Apprenticeship training costs are fully subsidised by the Government and your employer.

At Riverside College we offer higher level apprenticeships in the following Standard:

- Level 4 Professional Accounting or Taxation Technician
- Level 4 Network Engineer
- Level 5 Operations or Departmental Manager
- Level 4 Engineering Manufacturing Technician

## HOW DOES IT WORK?

As a Higher Apprentice you will be assigned a tutor/assessor who will visit you in your workplace regularly to support you to complete any project work and assess the development or work place competencies and behaviour.

Your Apprenticeship will include 'off the job' training to support your knowledge and understanding, often including additional qualifications and study at college. You will need to complete an End Point Assessment to achieve your apprenticeship.

Apply direct to us at [www.riverside.ac.uk](http://www.riverside.ac.uk)

# ADULT COURSES

If you do not have the qualifications or experience required or are not quite ready to study on a higher education programme, we have a wide range of adult courses. Our dedicated Admissions Team can advise you about the right course and prepare you for the next steps.

We offer courses including:

- Catering & Hospitality
- Computing & Digital Skills
- Construction Trades
- Engineering & Renewables
- Languages
- English, Maths & ESOL
- Hair, Beauty, Nails & Media Makeup
- Health, Social Care & Counselling
- Mental Health & Supporting Others
- Sport
- Teaching Assistants
- Teaching Professions
- Distance Learning
- Adult Apprenticeships



## ACCESS TO HIGHER EDUCATION

Access to Higher Education Courses are aimed at students who are aged 21 years old and above who are aspiring to follow a career path that requires university level qualifications. It is a 1-year intensive course offering UCAS points and is designed to give you the qualifications to start a degree course.

**NEW:** We are now offering the Access to HE qualification ONLINE which means you can study the qualification in your own time, whilst having access to the support of face-to-face drop-in sessions with our outstanding specialist Access tutors.

Visit [www.riversidecollege.ac.uk/adults/access/](http://www.riversidecollege.ac.uk/adults/access/) for the different subjects offered.



### Michala Donal

Access to Nursing at  
Riverside College

Adult Nursing Degree at  
the University of Chester

Michala is now working  
as a Sister in a busy  
Accident and Emergency  
Department, watch her  
story here.



# HOW TO APPLY

Apply direct to us, no need to apply through UCAS. You can apply online via the website, **[www.riverside.ac.uk](http://www.riverside.ac.uk)**, or email **[advice@riverside.ac.uk](mailto:advice@riverside.ac.uk)** and we will send you an application form.

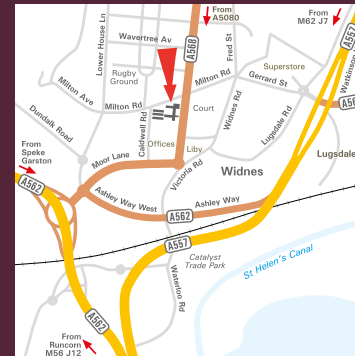
Most of the courses featured in this guide will require an admissions interview. We will contact you with a date for your interview where we will be able to answer all of your questions and make sure the course is right for you. We will also discuss any financial or other support available to you.

For more information on anything featured in this guide please go to our website at **[www.riverside.ac.uk](http://www.riverside.ac.uk)** or email our admissions team on **[advice@riverside.ac.uk](mailto:advice@riverside.ac.uk)**.

You can also come along to our Open Events to speak to tutors and ask any questions. Visit our website for event dates and times.

We make every effort to ensure that the information in this guide is correct at the time of publication (March 2023). However, we reserve the right to make changes to our course offering for operational reasons.

# HOW TO FIND US



## Riverside College

**Kingsway Campus**  
Our Kingsway Campus is situated close to Widnes Town Centre near Victoria Square.

Kingsway Campus  
Kingsway, Widnes  
WA8 7QQ



## Cronton College

The college is situated on the A5080 Cronton Lane between the villages of Cronton and Farnworth.

Cronton Campus  
Cronton Lane,  
Widnes, Cheshire  
WA8 5WA

**Free parking and excellent rail and bus services for both sites.**

Apply direct to us at **[www.riverside.ac.uk](http://www.riverside.ac.uk)**

# OPEN EVENTS

Open Evenings are a fantastic opportunity to find out more about our Higher Education courses.

Visit our website to find out details about our next Open Evening.  
[www.riversidecollege.ac.uk/open-evenings/](http://www.riversidecollege.ac.uk/open-evenings/)

**Riverside  
College**

Widnes & Runcorn

**STAY LOCAL, GO FAR**

0151 257 2053

[info@riversidecollege.ac.uk](mailto:info@riversidecollege.ac.uk)

[www.riverside.ac.uk](http://www.riverside.ac.uk)

---

If you would like a copy of this document in large format or braille, please call 0151 257 2800